

# BNC

AUTOCONTROL

# FLOWMETER

## POSITIVE DISPLACEMENT FLOW METER



# BNC

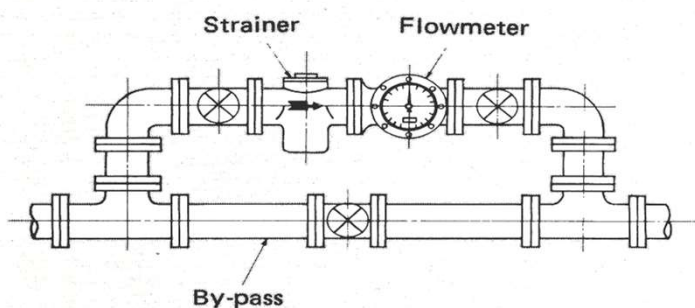
industrial co., ltd.

## MODEL CODES:

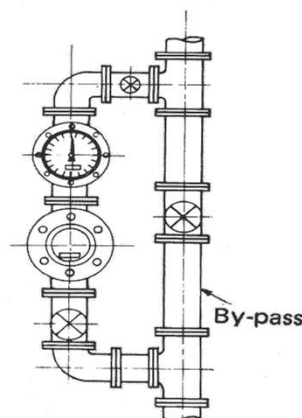
Basic Model	Size	Max. temp.	Mat'l	Display/output	Connection	Description	
RA	25					1" (25mm)	
	40					1-1/2" (40mm)	
	50					2" (50mm)	
	80					3" (80mm) 35 M3/Hr	
	80L					3" (80mm) 50 M3/Hr	
	80H					3" (80mm) 70 M3/Hr	
	100					4" (100mm) 70 M3/Hr	
	100L					4" (100mm) 120 M3/Hr	
		-0					80 °C
		-1					120 °C
	-2					180 °C	
			F			FC 25	
			S			SUS316	
				1		5 digit Flowrate/8 digit Totalizer	
				2		Totalizer 8 Digit/ Reset 5 Digit	
				3		Pulse output only	
				4		5 digit Flowrate/8 digit Totalizer/Pulse	
				5		5 digit Flowrate/8 digit Totalizer/4-20 mA	
				+ 6		Explosion Proof - Class I, Division I, Groups B,C&D	
				7		RS485	
				J10		JIS 10K FF	
				J20		JIS 20K FF	
				A15		ANSI 150#FF	
				A30		ANSI 300#FF	
				P10		PN 10	
				P16		PN 16	
				P20		PN 20	



## INSTALLATION:



Horizontal piping arrangement  
Left → Right



Vertical piping arrangement  
Bottom → Top

**BNC** industrial co., ltd.

Flow Range : Accuracy  $\pm 0.5\%$

Unit : m<sup>3</sup>/hour

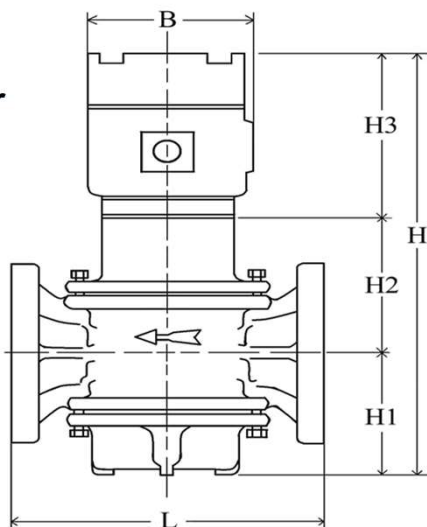
Capacity type Note 1	Dia-meter	Terms Note 2	Fluid Viscosity	Petroeum								
				LPG	Gasoline	Kerosene	Light oil, grade-A heavy oil (high temperature)	Grade-A heavy oil	Grade-B heavy oil, Grade-C heavy oil, (high temperature)	Grade-C heavy oil		Highly viscous fluids
				0.1cP~	0.5cP~	2cP~	5cP~	10cP~	50cP~	150cP~	500cP~	2000cP~
25 40	25 40	Normal	Continuous	-	1~4.5	0.8~4.5	0.4~6	0.1~6	0.05~6	0.025~6	0.013~4.5	0.007~3.5
			Intermittent	-	1~6	0.8~6	0.4~7	0.1~7	0.05~7	0.025~7	0.013~6	0.007~4.5
			Maximum	-	7	7	8	8	8	8	8	7
40 50	40 50	Normal	Continuous	-	2~9	1.5~9	0.8~13	0.25~13	0.1~13	0.05~13	0.02~9	0.01~7.5
			Intermittent	-	2~13	1.5~13	0.8~15	0.25~15	0.1~15	0.05~15	0.02~13	0.01~9
			Maximum	-	15	15	17	17	17	17	17	15
80	80	Normal	Continuous	6.5~17	5~17	3.5~25	1.8~25	0.6~35	0.3~35	0.15~35	0.07~20	0.03~17
			Intermittent	6.5~28	5~28	3.5~35	1.8~35	0.6~40	0.3~40	0.15~40	0.07~35	0.03~28
			Maximum	35	35	40	40	45	45	45	45	35
80L 100	80 100	Normal	Continuous	13~35	8~35	5~35	2.5~50	1~50	0.5~50	0.25~50	0.12~35	0.06~28
			Intermittent	13~50	8~50	5~50	2.5~55	1~55	0.5~55	0.25~55	0.12~50	0.06~35
			Maximum	55	55	55	60	60	60	60	60	55
100L	100	Normal	Continuous	25~85	16~85	12~85	8~120	4~120	2~120	0.7~120	0.35~85	0.17~60
			Intermittent	25~120	16~120	12~120	8~130	4~130	2~130	0.7~130	0.35~120	0.17~85
			Maximum	130	130	130	140	140	140	140	140	130

Capacity type Note 1	Dia-meter	Terms Note 2	Fluid Viscosity	Water		Chemicals		Petrochemicals		
				Normal temperature (up to 80°C)	High temperature (80~120°C)	Concent-rater sulfuric acid	Cuastic soda (30%)	Plasticizer	Tar	Polyester
								50cP	500cP	2000cP
25 40	25 40	Normal	Continuous	0.8~3.5	1~2.8	0.4~2	0.1~4.5	0.05~4.5	0.013~4.5	0.007~3.5
			Intermittent	0.8~4.5	1~3.5	0.4~2.8	0.1~6	0.05~6	0.013~6	0.007~4.5
			Maximum	5	4.5	3.5	7	7	7	6
40 50	40 50	Normal	Continuous	1.5~7.5	2~6	0.8~4.5	0.25~9	0.1~9	0.02~9	0.01~7.5
			Intermittent	1.5~9	2~7.5	0.8~6	0.25~13	0.1~13	0.02~13	0.01~9
			Maximum	10	9	7.5	15	15	15	13
80	80	Normal	Continuous	3.5~15	5~10	3.5~12	0.6~20	0.3~20	0.07~20	0.03~17
			Intermittent	3.5~20	5~17	3.5~15	0.6~35	0.3~35	0.07~35	0.03~28
			Maximum	20	20	20	40	40	35	28
80L	80	Normal	Continuous	5~28	8~22	2.5~17	1~35	0.5~35	0.12~35	0.06~28
			Intermittent	5~35	8~28	2.5~22	1~50	0.5~50	0.12~50	0.06~35
			Maximum	40	35	28	55	55	55	50
100L	100	Normal	Continuous	12~60	16~50	8~40	4~85	2~85	0.35~85	0.17~60
			Intermittent	12~85	16~60	8~40	4~120	2~120	0.35~120	0.17~85
			Maximum	95	85	60	130	130	130	120

- Remark: 1. Intermittent : continue flowing under 8 hours  
 2. Continuous: continue flowing 8-24 hours  
 3. Maximum: Only can working in short period

### Standard specifications

### Dimensions of flow meter



Counter	7 digit or 8 digit, rate 5 digit
Accuracy:	0.5% ( 0.2% possible)
Max. Pressure:	10kg/cm <sup>2</sup> or 20kg/cm <sup>2</sup>
Max. Temperature:	180°C
Connection	JIS, DIN, ANSI

Model	L	H	B	H1	H2	H3	weight (kg)
RA25	200	288	115	78	70	140	15
RA40	200	288	115	78	70	140	18
RA50	250	340	115	105	95	140	22
RA80	325	430	115	144	146	140	43
RA80L	320	420	115	144	136	140	48
RA80H/RA100	408	530	115	195	195	140	75
RA100L	425	630	115	225	265	140	175